

New Community Action State Association Staff Orientation

Tuesday, March 24 , 2026



National Community Action Partnership
1020 19th Street, NW, Suite 700
Washington, DC 20036
www.communityactionpartnership.com



The Promise Of Community Action

Community Action changes people's lives, embodies the spirit of hope, improves communities, and makes America a better place to live. We care about the entire community, and we are dedicated to helping people help themselves and each other.



Say hello! Please share your name and job title!

Safari, Program
Coordinator.

Matthew Moser-
Community
Engagement Manager
(CAAP)

Joey Zinni, Accounting
Assistant

I'm Shayna Filion and I am
an Executive Assistant at
the NYS Community Action
Association

Mia Troy, Operations &
Engagement mngr

Jill Fox Assistant
Executive Director

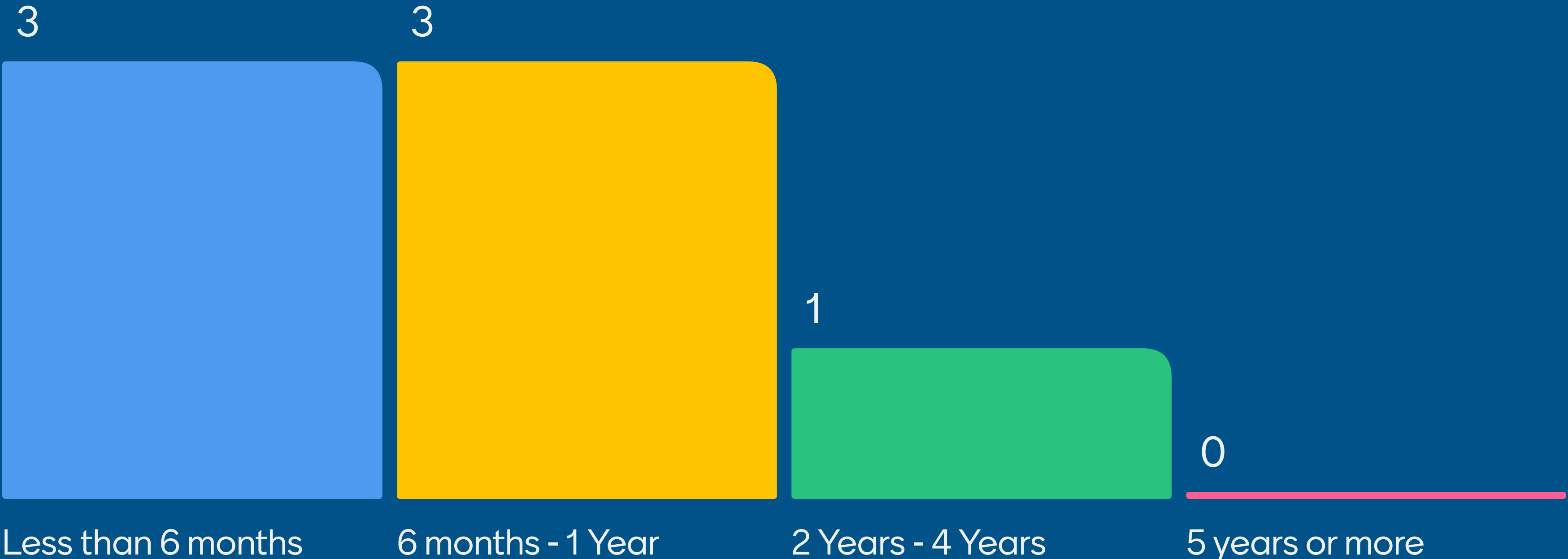
Lauren Kolojejchick-kotch,
Utility Policy Manager at
the Community Action
Partnership of Oregon

Three years

How long have you been in Community Action?



How long have you been at your State Association?



What is one thing you hope to learn today?

More about how NCAP works with state associations

Ways to expand awareness of Community Action in our state

Get a deeper understanding of the national structure of Community Action

Differences between the different state associations. Experiences from other new state association members.

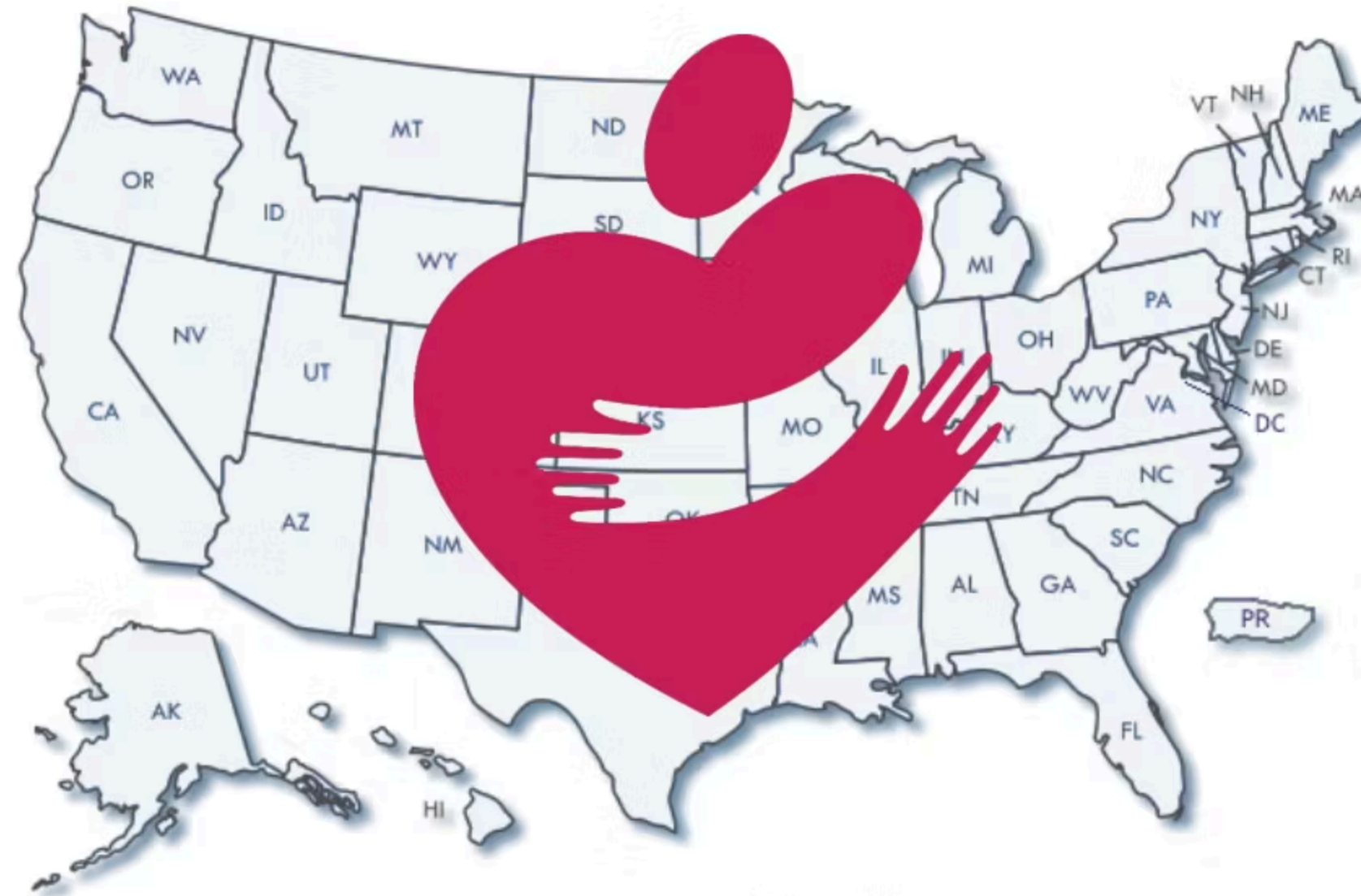
More about other state associations and how they operate. Connections between state associations and NCAP.



Community Action Network

Red, Blue, Purple States

*Board and Staff on All
Sides of the Aisle*



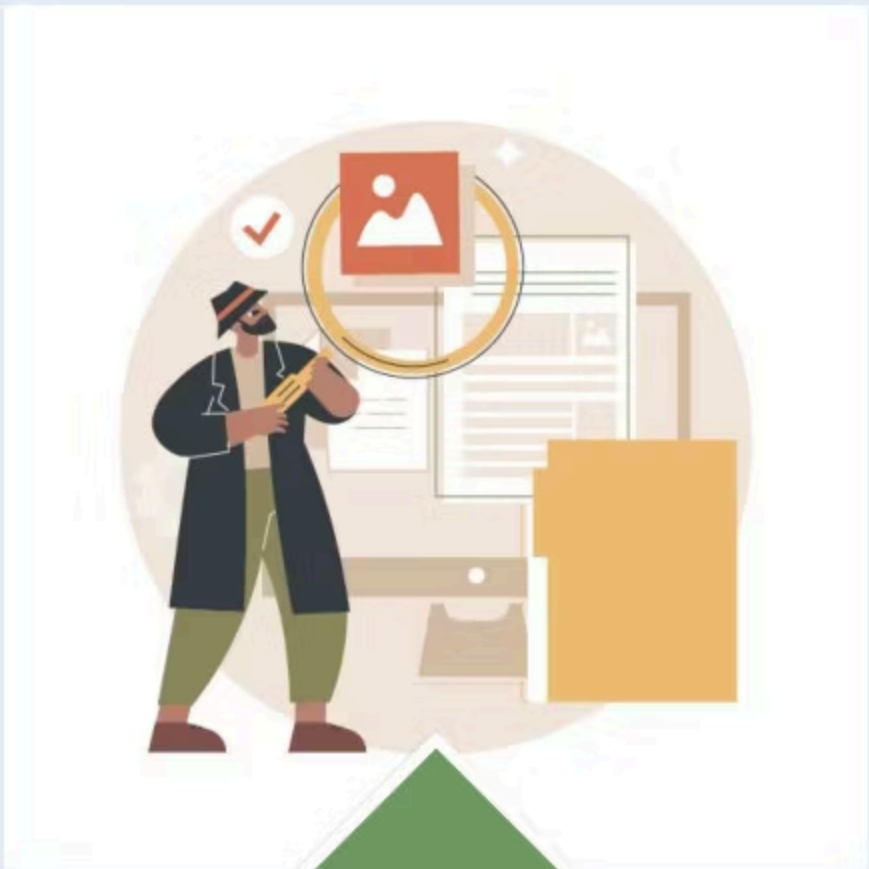
950+ Agencies | 44 State Associations | 50+ State CSBG Offices | National Partners
More than 15 million served

*We work together to promote workable solutions that connect more families to
opportunity*

Community Action Agencies...



Promote community-wide solutions to seemingly stubborn challenges.



Share evidence with national, state, and local leaders about what works.

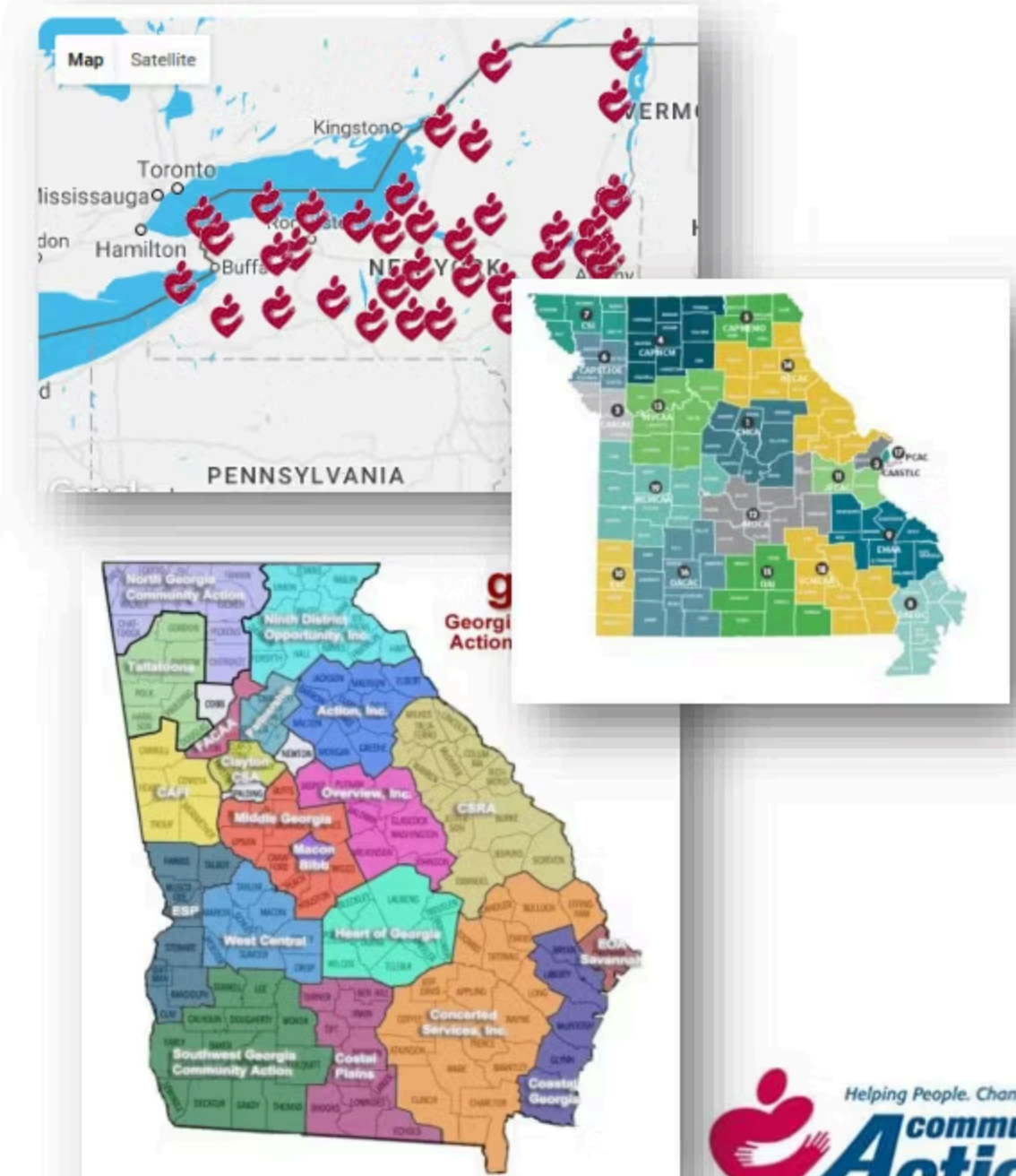
Connect individuals and families with approaches that help them succeed.

950+ Community Action Agencies Nationally

Community Needs Assessment Conducted Every Three Years Drives
Localized Response to Needs.

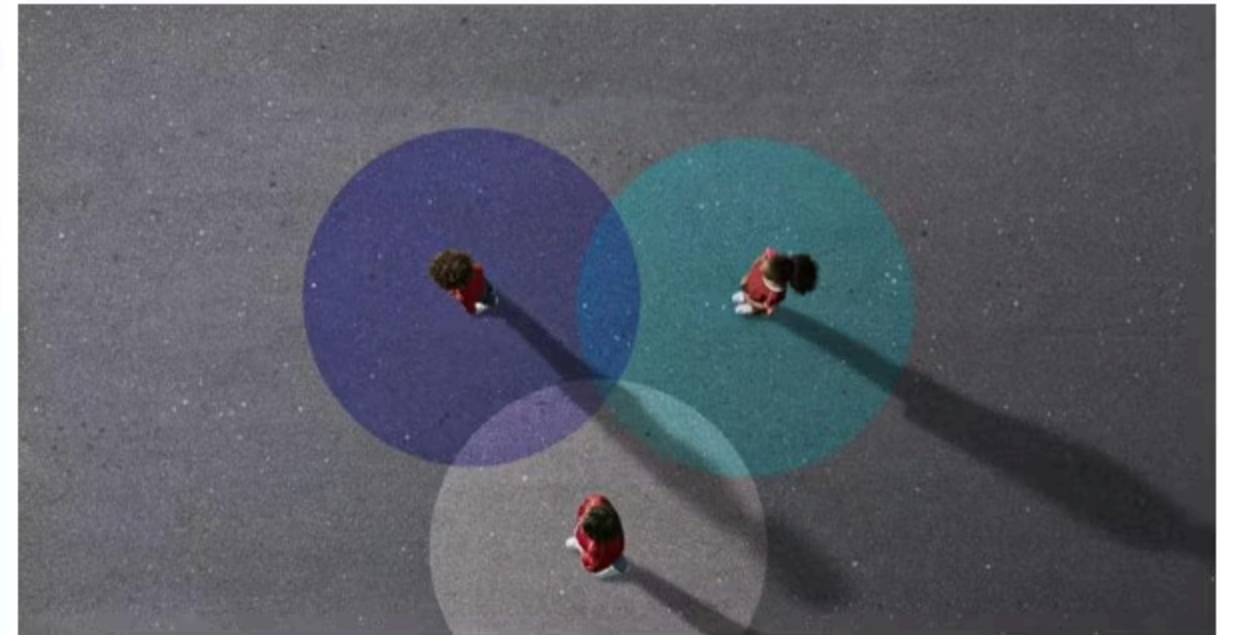
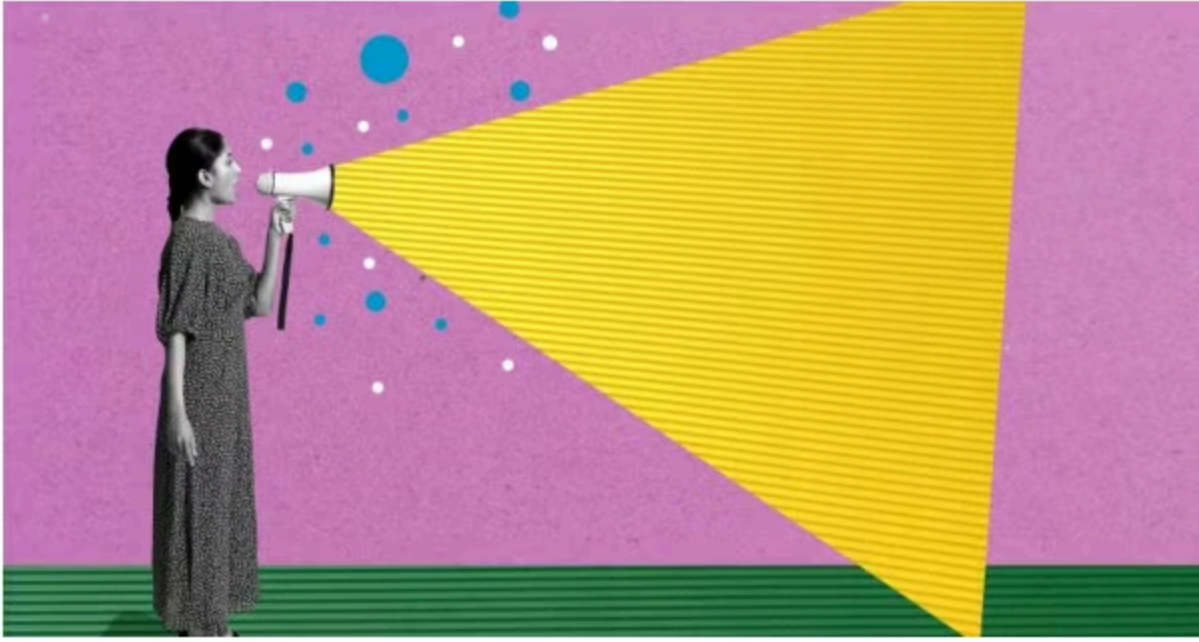
Common Programs:

- Whole-Family Approach
- Health Care – FQHC, Dental Clinics, Mobile Health
- Community and Economic Development
- Early Childhood Education and Family Development
- Energy and Housing Assistance
- Food and Nutrition Services
- Employment and Training
- Supportive and Emergency Services
- Senior Services
- Weatherization
- Case Management/Family Coaching
- Financial Capability/Asset Development/VITA



Internal Network Partners and Relationships





Role of the State Association

Role of the State Association



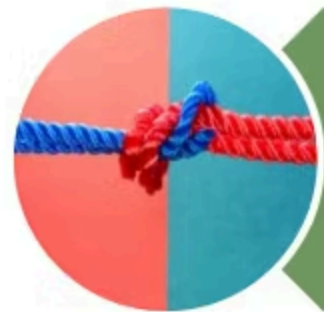
Training and Technical Assistance



Advocacy



Communications and Information Dissemination



Building & Strengthening the Community Action Network

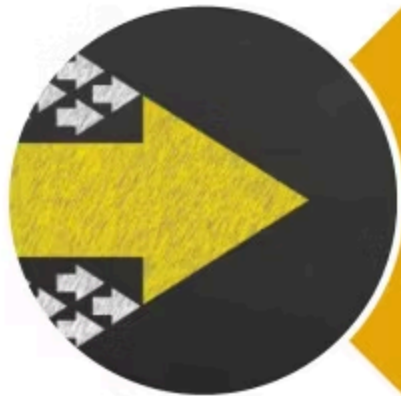
Role of the State Association



Leadership Development



Leveraging and Influencing
Funding



Association Management

Which of the common State Association roles are you most engaged in?



5 Training & Technical Assistance



4 Advocacy



6 Communications & Information Dissemination



6 Building & Strengthening the Community Action Network



1 Leadership Development



1 Leveraging & Influencing Funding



1 Association Management



Let's hear from a colleague!

Matthew Moser

Community Engagement Manager

Community Action Association of Pennsylvania



Working With Your Members

- Caring and Feeding of Members
- Engagement in T & TA
- Responsiveness



National Community Action Partnership NCAP or Partnership

Connecting, Supporting, and Leveraging the Expertise of the Nation's 950+ CAAs

- Training, T/TA, Tools, Toolkits, Webinars, Learning Communities
- National Conferences
- Branding and Communications
- Advocacy
- CCAP
- Excellence
- CSBG Organizational Standards
- Weatherization
- National Board and Commissions-Officers and Regional Reps, Economic Mobility, Excellence, CCAP, Head Start, Energy, Young Professionals

Which NCAP conventions, conferences, or events have you attended or participated in?



2 NCAP Annual Convention

0 NCAP Management & Leadership Training Conference (MLTC)

3 Webinar



1 Virtual Training (e.g., cohort meetings, Skill Builder,, etc.)

1 Online Learning / eCourse



THE DATA YOU NEED WHEN YOU NEED IT!



NCAP Data Hub

**Community Assessment? Grant application?
Communications?**

The NCAP Data Hub helps you find relevant and trusted data to create easy, custom reports and maps about your community.



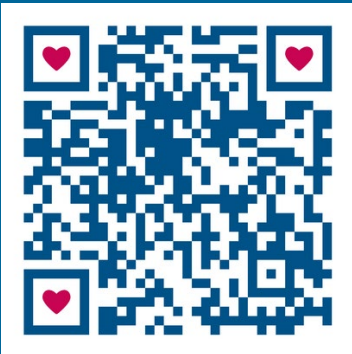
SCAN TO VISIT THE NCAP DATA HUB



NRMC Organizational Risk Management & Assessment Portal

- Agencywide Risk Assessment Tool
- Staff Survey Tool
- Customizable Policy Templates
- Other Member Benefits & Tools
 - Webinars
 - RISK HELP™ - Q & A Portal

SCAN TO VISIT



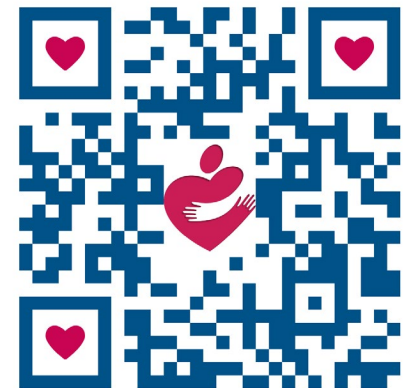
COMMUNITY ACTION ACADEMY

eLearning and Peer Sharing for the Community Action Network!



- eCourses
- Cohort Engagements
- Self-Paced Courses

Community Action Academy



Subscribe to NCAP!



[Subscribe to NCAP eNews](#)



[Subscribe to Fresh Finds](#)



[Subscribe to NCAP Weatherization+](#)

Connect with Us on Social Media!



[Community Action Partnership National
Office Facebook](#)



[Community Action Partnership
National Office LinkedIn](#)

Contact Information

The National Community Action Partnership is YOUR partnership and is always ready to support your organization in any way.

Contact us at any time!

Denise Harlow, MSW, CCAP
Chief Executive Officer

dharlow@communityactionpartnership.com

Maribeth Schneber-Rhemrev, CCAP, PMP, NCRT
Director, Organizational Capacity Building

mschneberrhemrev@communityactionpartnership.com

Terry Bearden, CCAP, NCRA

Project Director, Organizational Capacity Building

tbearden@communityactionpartnership.com

Training and Technical Assistance Requests:

ncaphelps@communityactionpartnership.com

Tell us how we did...
and how we can help!

<https://www.surveymonkey.com/r/3-24-26-NewStateAssnStaff>

