

Fresh Finds

The Collaborative on Economic Mobility Newsletter

September 2025

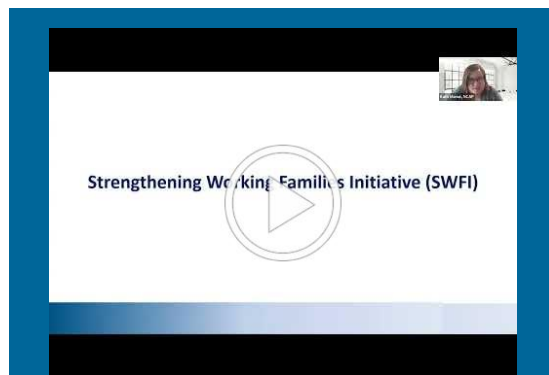
Lessons Learned: *Building and Sustaining Strategic Partnerships*

Watch the Collaborative on Economic Mobility's recent webinar training series and uncover any insights you may have missed!



Part 1 - Building & Reimagining Established Partnerships

This webinar offers insights into promising practices for advancing economic mobility through strategic partnerships. Participants were introduced to Bucks County Opportunity Council's innovative "Coaches on Campus" program which exemplifies how organizations can expand their reach while leveraging an existing partnership with their local community college and reimagining their service delivery to deepen their impact.



Part 2 - Sustaining Strategic Partnerships

This webinar highlights the importance of sustaining long term strategic partners to maximize impact. Action for a Better Community and Rochester Rehabilitation shared their experience implementing the Strengthening Working Families Initiative (SWFI) in Rochester, NY. They showcase how their initial collaboration evolved into a strong network of partners who saw strength in their shared commitment to their community.

BUILDING & REIMAGINING ESTABLISHED PARTNERSHIPS

Re-imagining What Partnerships Can Be

Partnerships can extend far beyond the familiar when we broaden the circle of who we consider as potential partners and reframe partnerships as relationships that contribute to building a connected community of support. This network can be fostered with diverse partnerships such as community colleges, hospitals, public health departments, small and large businesses, trade unions, cultural organizations, and alumni associations to actively support and amplify each other's shared community goals. These partnerships can bring valuable resources like funding, support, job training opportunities, and spark program innovation. Re-imagining your existing and future partnerships encourages both partners to think beyond their own scope and work towards change that will benefit the entire community.

BUILDING & REIMAGINING ESTABLISHED PARTNERSHIPS

Building on Established Partnerships

Don't start from scratch! Your Community Action Agency (CAA) likely has a network of existing partnerships. The key is to strategically expand and deepen these connections to pursue innovative economic mobility initiatives.



COMMUNITYACTIONPARTNERSHIPS.COM | 1

Each webinar is accompanied by a supplemental guide to support the learning and increase knowledge-building. Dive deeper into promising practices for building and sustaining strategic partnerships. Explore how strategic partnerships can serve as powerful pathways to economic mobility and learn how Community Action Agencies can build, re-imagine, and strengthen both new and existing collaborations to better align and amplify shared community goals.

[Click here](#) to access **Part 1: Building & Reimagining Established Partnerships**

[Click here](#) to access **Part 2: Sustaining Strategic Partnerships**

Access the Webinar Series

Promising Practices for Workforce Development: Integrating Technology & Digital Literacy Initiatives

Report: *The Impact of Generative AI*

The AI-Enabled ICT (Information and Communications Technology) Workforce Consortium, led by Cisco and other global tech companies, explores how AI is transforming jobs across the tech sector. This report highlights the evolving nature of these roles and emphasizes the growing need for skills such as AI literacy, ethics, and data analysis. The consortium aims to train 95 million people worldwide over the next decade to help prepare the workforce for a rapidly changing digital landscape.

[Click here](#) to learn more.



Article: *Resources for Digital Skills*

Community Action Agencies understand that digital skills represent an opportunity for those looking to enter the workforce. For today's job seeker, digital literacy is as important as traditional literacy, particularly for lifelong careers. Digital literacy is the key that opens doors to the following:

- Job search efficiency
- Expanded access to job opportunities, including rural, remote, and the gig economy
- Employment readiness
- Supportive services
- Career advancement.



[Click here](#) to read the full article.

Highlighted Initiative: *Senior Digital Literacy Program*

Community Action for Improvement (CAFI), a Community Action Agency in Georgia, utilizes the [Northstar Online Learning](#) curriculum to operate a [Senior Digital Literacy Program](#). This program equips and empowers seniors with essential basic technology skills including computer, internet, phone, and email. This type of program is important considering that older Americans are a growing segment of labor force and are [projected to make up 9.4 percent of the workforce by 2028](#).



Case Study: *Broadband Internet Access in Chattanooga, TN*

This case study highlights [HCS EdConnect](#), an initiative in Chattanooga, Tennessee that provides free, high-speed internet to low-income Hamilton County students through a public-private partnership. The program connects thousands of families and guarantees service for at least 10 years. HCS EdConnect builds on the region's broader digital access efforts, including the [Tech Goes Home Tennessee](#) initiative, which offers digital skills training and support to residents, including Early Childhood Educators.



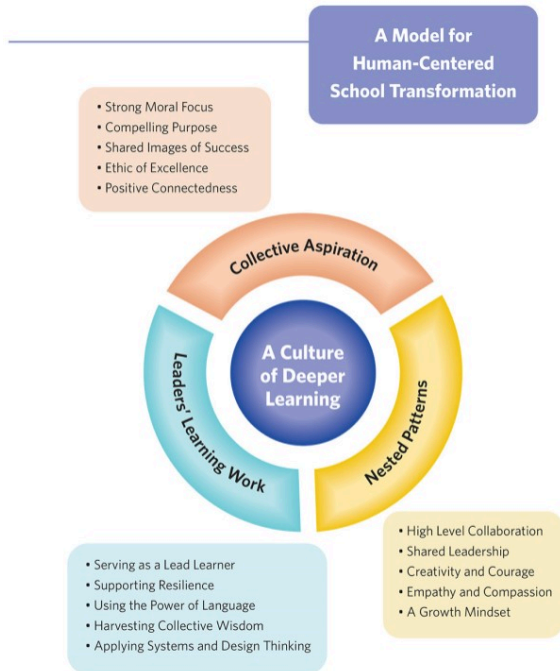
[Click here](#) to learn more.

Promising Practices for High-Quality Education: *Collaborating with Schools & Supporting Students*

A Model for Human-Centered School Transformation

The Center for Transforming Education offers a Human-Centered Model designed to help schools develop flexible, growth-oriented mindsets. This approach encourages educators and leaders to embrace change, collaborate around shared goals, and create supportive environments. By transforming school culture and practices, the model aims to better meet students' needs and drive lasting, meaningful improvement.

[Click here](#) to learn more.



Mentoring Matters

Mentoring Matters provides practical tools and guidance to support mentors in building strong, effective relationships. This resource emphasizes goal setting, communication strategies, and skill development to help mentors navigate each stage of the mentoring journey with clarity and confidence.



[Click here](#) to learn more.

Promising Practices in Community-Asset Building: Establishing Locally Controlled & Place-Based Approaches

Eleven Principles for Creating Great Community Places

What are the elements for effectively transforming public spaces into vibrant community places? [Reimagining common spaces](#) such as parks, plazas, public squares, streets, and sidewalks unlocks the opportunity for community development and neighborhood revitalization. Through collaborative private-public partnerships, Community Action Agencies can advance economic mobility by aligning resources and priorities towards shared goals to create great places for communities to come together.



[Click here](#) to learn more.

Family Focus: Two-Generation & Whole Family Approaches

Dig into the latest tools and resources to support the implementation of a Whole Family Approach. This framework is designed to increase economic

mobility by strategically and intentionally working with children and the adults in their lives simultaneously through integrated services.



Using a Structured Learning Process to Strengthen Two-Generation Service Delivery

Explore how two-generation programs can improve family services through structured learning, using the Learn, Innovate, Improve (LI²) approach. This resource emphasizes how small, data-informed adjustments grounded in participant and staff input can lead to more effective service delivery. You can learn how to better strengthen outcomes through intentional, collaborative change.

[Click here](#) to access.

Highlighted Initiative: *Whole Family Approach in Action!*

This Whole Family Approach Design Brief Series highlights the work of Community Action Agencies who have successfully implemented a Whole Family Approach. Each Design Brief provides a timeline to walk through the process from planning and design to piloting and implementation. Explore the design brief to learn who was a part of the guiding coalition, what successes and challenges were encountered along the way, what resources were helpful, and what lessons were learned. You will also be inspired by the stories of customer success. Apply these lessons to your local agency and take the next steps to start or strengthen a Whole Family Approach!



[Click here](#) to learn more.

Upcoming Learning Opportunities

Don't miss out on these upcoming learning opportunities available from the Collaborative on Economic Mobility!

[Tools and Resources to Advance Economic Mobility](#)

Wednesday, November 19, 2025 at 2pm ET | 1pm CT | 12pm MT | 11am PT

This webinar training offers a practical overview of tools and resources available through the Collaborative on Economic Mobility that are designed to help support individuals, families, and communities on the journey to economic mobility. Participants will explore the curated selection of resources that address common challenges to economic mobility and will gain insight into actionable strategies for implementation with local community initiatives.

[Click here](#) to register.



We Want to Hear From You!



Peer Sharing & Learning

Does your agency, tribe, state, or region have an innovative and efficient program, service, or approach you would like to share with your peers? Let us know more about it and have the opportunity to be featured in an upcoming newsletter!

[Share Your Innovations!](#)



Evaluation

Was this newsletter helpful for you? Please take the time to complete this brief evaluation form to let us know your feedback. We value your opinion to help make improvements moving forward.

[Share Your Feedback!](#)

If you have any questions, contact us at:
cem@communityactionpartnership.com.

This newsletter is supported by Grant Number 90ET0502 from the ACF Office of Community Services, Community Services Block Grant within the Administration for Children and Families, a division of the U.S. Department of Health and Human Services. Neither the Administration for Children and Families nor any of its components operate, control, are responsible for, or necessarily endorse this newsletter (including, without limitation, its content, technical infrastructure, and policies, and any services or tools provided). The opinions, findings, conclusions, and recommendations expressed are those of the author(s) and do not necessarily reflect the views of the Administration for Children and Families and the ACF Office of Community Services, Community Services Block Grant.

National Community Action Partnership | 1020 19th Street Suite 700 | Washington, DC 20036 US

[Unsubscribe](#) | [Constant Contact Data Notice](#)



Try email marketing for free today!