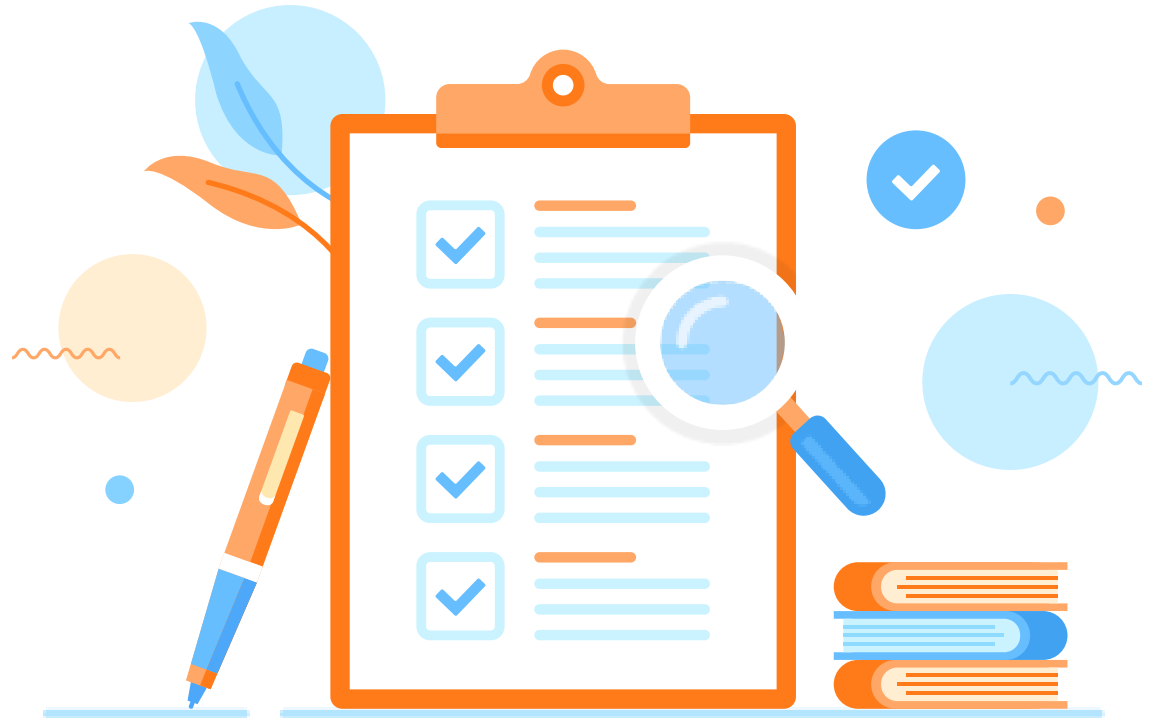




Emergency and Aftermath: Building a CAA Strategic Response Toolkit

NCAP Annual
Convention

August 27, 2025



This presentation was created by the National Community Action Partnership in the performance of the U.S. Department of Energy's Office of State and Community Energy Programs Grant Number EE00010310. Any opinion, findings, conclusions, or recommendations expressed in this material are those of the presenters and do not necessarily reflect the views of the U.S. Department of Energy's Office of State and Community Energy Programs.

Share Your Story!

caplawinfo@caplaw.org



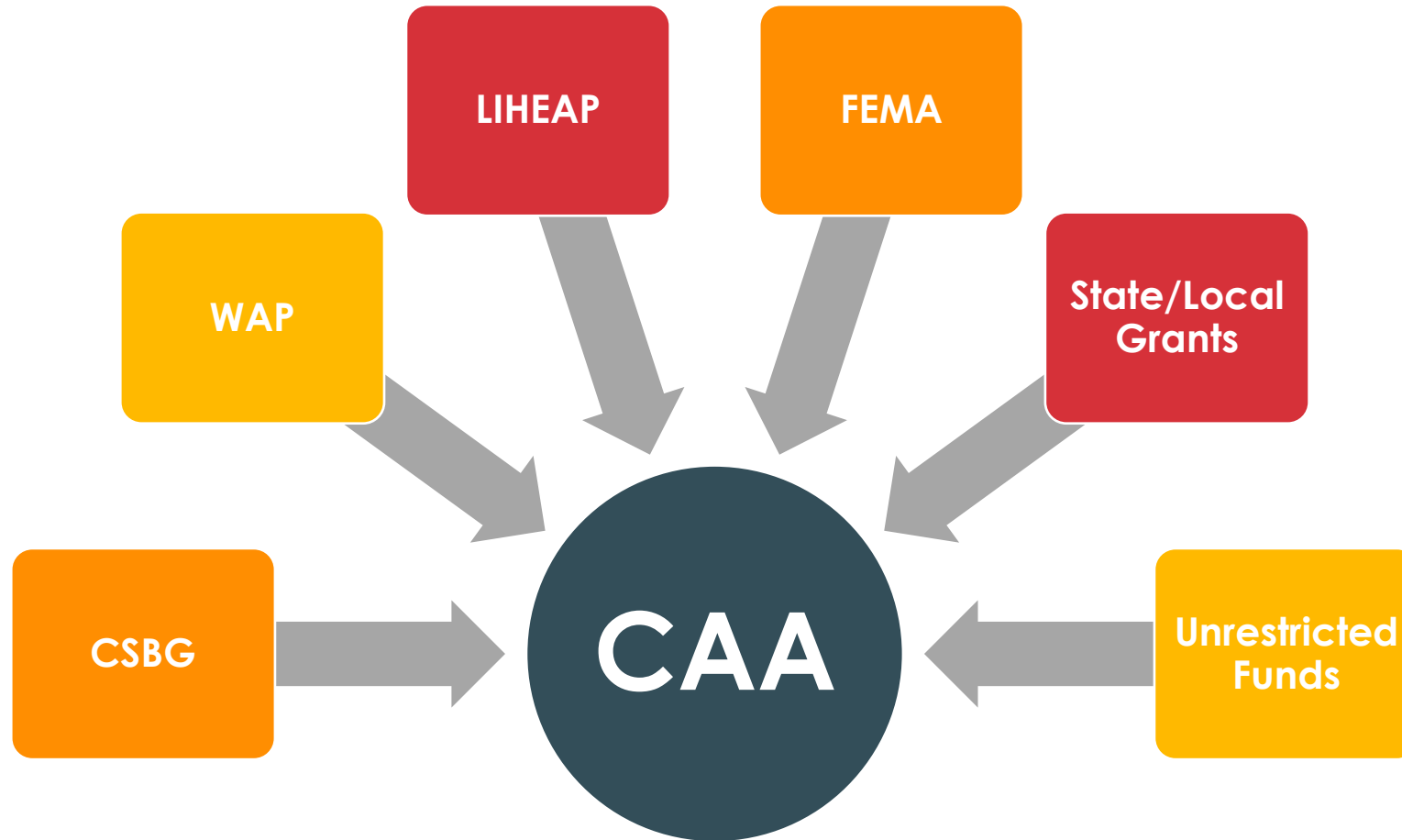
Phases of Emergency Management



Toolkit Framework



Funding Sources



CAPLAW Resources

Case Studies & Weatherproofing Bylaws

Leadership During Crisis: Lessons from the COVID-19 Pandemic

NORTHERN KENTUCKY COMMUNITY ACTION COMMUNITY SERVICES

Service Areas	Boone County, KY
Locations	25
Main Office Location	Covington, KY
Leadership	Catrena F. J.C. Morgan, Aurelia R.
Staff Size	155
Annual Budget	\$20 million
Board Size	24
Major Program Areas	Family Support, Financial, Food, Financial, Health, Online

Leadership During Crisis: Lessons from the COVID-19 Pandemic

PRO ACTION OF STEUBEN AND YATES, INC.

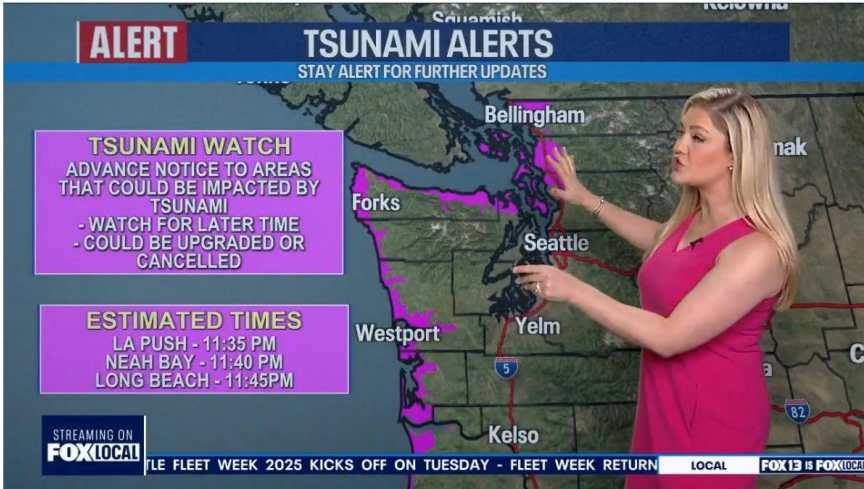
Service Area	Steuben and Yates, two rural counties in upstate New York
Main Office Locations	Bath and Penn Yan, New York
Leadership	Laura Rossman, Chief Executive Officer Debbi Deats, Board President
Staff Size	324
Annual Budget	\$16.2 million
Clients Served	13,986 in 2019
Board Size	15
Major Program Areas	Resilient Children and Families Early Childhood Learning and Development Early Head Start Head Start Women, Infants and Children (WIC) Family Literacy and Education Home-Based Services
	Thriving Seniors Referral Programs Wellness Programs In-Home Services Nutrition Programs
	Prosperous Futures Adult Literacy Services Youth Empowerment Program American Job Center Network / Workforce NY Senior Community Service & Employment Wheels for Work Child Care
	Basic Needs Support

Weatherproofing CAA Bylaws

Preparing for Emergency Governance



Earthquake



Tsunami



Fire



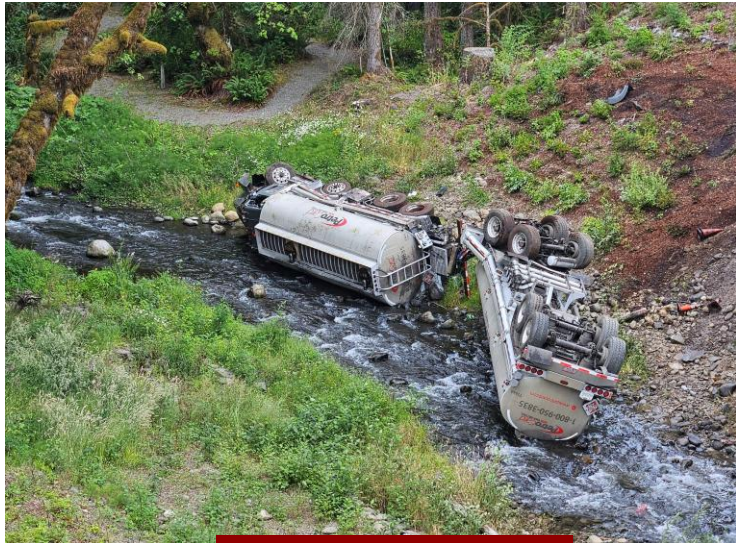
Disaster Risks of Washington State



Volcanos



Flood



Other/Hazards

Disaster Recovery Case Management



A SUB-CONTRACTED PARTNERSHIP WITH CLALLAM COUNTY EMERGENCY MANAGEMENT WAS DEVELOPED TO ASSIST COMMUNITY MEMBERS:

- FEMA
- INSURANCE
- REAPPLICATIONS
- UNMET NEEDS
- RESOURCE NAVIGATION

COMMUNITY EMERGENCY RESPONSE TEAM (CERT)



AGENCY FOCUS:

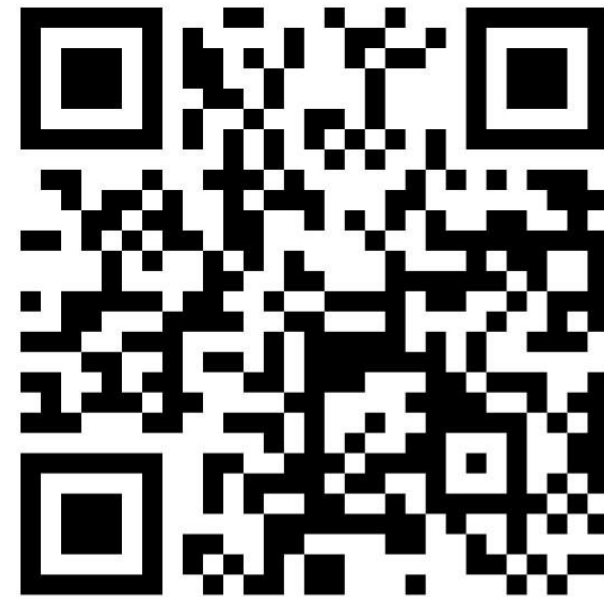
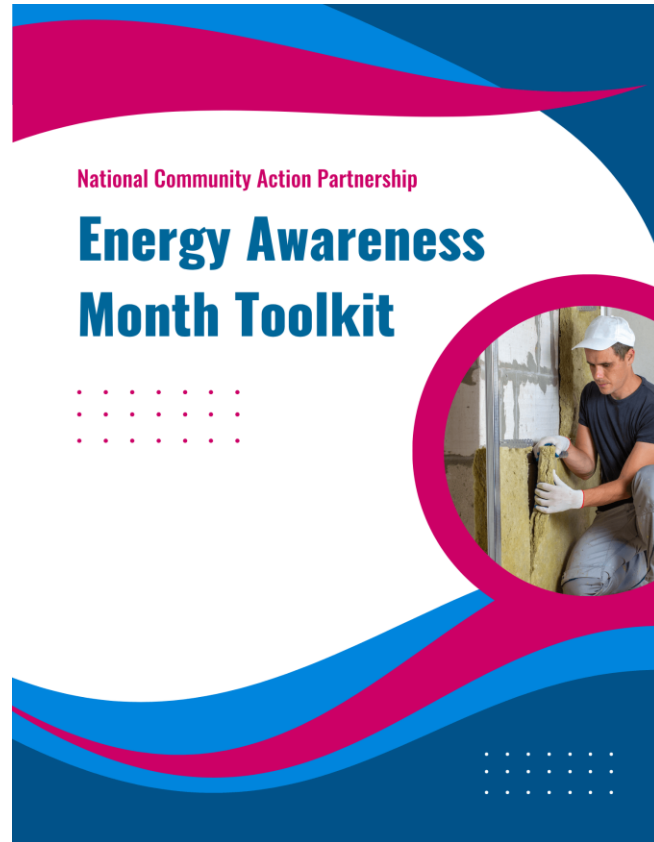
- PREPAREDNESS RELATED TO RESPONSE & RECOVERY
- BASIC CERT VOLUNTEER TRAINING
- ONGOING CERT TRAINING AND CERT PROGRAM MANAGER TRAINING
- COMMUNITY ORGANIZATIONS ACTIVE IN DISASTER COMMITTEE

Share Your Story!

caplawinfo@caplaw.org



Download the 2025 Energy Awareness Month Toolkit!



Subscribe to
Weatherization
Plus



 Follow
@NcapEnergy



Thank you!

Connect with us:

energy@communityactionpartnership.com

communityactionpartnership.com