



Community Action Agencies Advancing Family Social and Economic Mobility through Whole Family Approach

WFA RESOURCE WEBINAR

March 16, 2022 | 2:00pm- 3:00pm EDT

HELLO THERE!

*We're glad that you
made it !*

YOU
ARE
ON

LAND



#HonorNativeLand
USDAC.us/NativeLand

Artwork & Design by
Warren Montoya - Tamaya & Kha'po Owingsh
Jaclyn Roessel - Dine



Land Acknowledgement

Every community owes its existence and vitality to generations from around the world who contributed their hopes, dreams, and energy to making the history that led to this moment. Some were brought here against their will, some were drawn to leave their distant homes in hope of a better life, and some have lived on this land for more generations than can be counted.



YOU
ARE
ON

LAND



#HonorNativeLand
USDAC.us/NativeLand

Artwork & Design by
Warren Montoya - Tamaya & Kha'po Owings
Jaclyn Roessel - Dine



Land Acknowledgement

<https://native-land.ca/>

- **This meeting is being held on the traditional lands of the _____ People, and I pay my respect to elders both past and present, who have stewarded this land throughout the generations.”**
 - Please take a moment to consider the many legacies of violence, displacement, migration, and settlement that bring us together here today.
- **Deliver** your statement in the chat including the land/people relevant to the land that you are occupying during this session. **Learn more** by taking time to learn about the Indigenous history of the land you live on. The Partnership team will share the link to the US Department of Arts and Culture in the chat now. Visit <https://usdac.us/nativeland> to get started.





The Promise Of Community Action

Community Action changes people's lives, embodies the spirit of hope, improves communities, and makes America a better place to live. We care about the entire community and we are dedicated to helping people help themselves and each other.

Presenters



Jeannie Chaffin
*Special Advisor,
Whole Family Approach*



Tiffany Day
*Director, Whole Family
Approach Innovations*



Aimee Roberge
*Senior Associate, Learning
and Dissemination*



Peter Coyne
*Program Associate,
Communication and
Dissemination*

**How familiar are you with the
whole family approach?**

**What are you hoping to learn
from this webinar?**

Why a 2Gen/Whole Family Approach?

Research shows that supporting children and their caregivers together has an outsize impact **for generations.**



A college degree doubles a parent's income.



A \$3,000 increase during early childhood yields a 17% increase in adult earnings.



The brains of new parents undergo major changes.



Research demonstrates a 13% ROI in high quality early childhood education.



Parents with health insurance are more likely to seek care for their children.

 **ASCEND**
THE ASPEN INSTITUTE

Principles to Put Children and Families at the Center

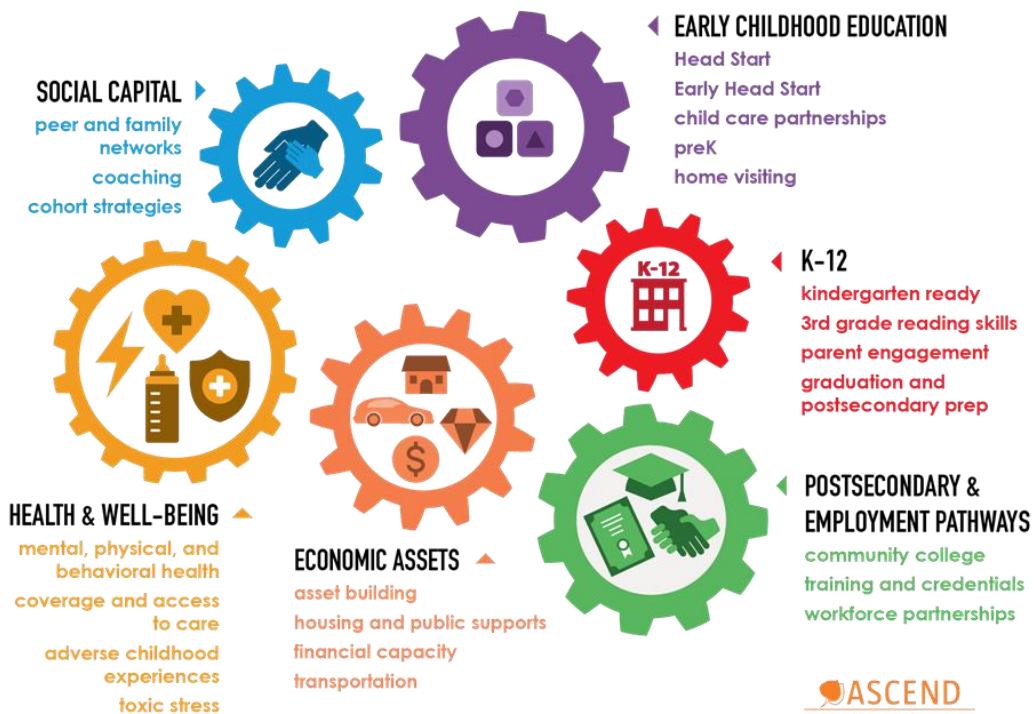
- Measure and account for outcomes for both children and their parents
- Engage and amplify the voices of families
- Ensure equity
- Foster innovation and evidence together
- Align and link systems and funding streams

2Gen/Whole Family Approach Concepts

THE 2GEN CONTINUUM



2GEN CORE COMPONENTS

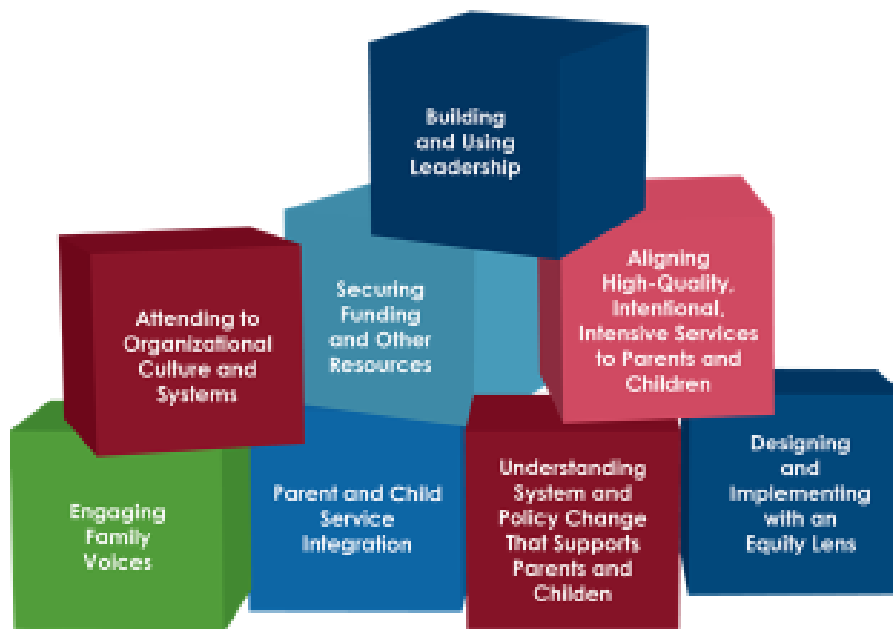


HALLMARKS OF THE 2GEN/WHOLE FAMILY APPROACH

- Center on families
- Integrate services
- Remove barriers
- Incorporate coaching
- Develop partnerships
- Center in equity, starting with racial equity
- Measure parent, child, and family outcomes
- Apply science and evidence while continually improving
- Attend to core life skills for children and parents
- Incorporate strategies that build family resiliency (trauma-informed focus)
- Provide high-quality services
- Deliver services of sufficient intensity, duration, and dosage to enable families to achieve social and economic mobility

2Gen/Whole Family Approach Concepts

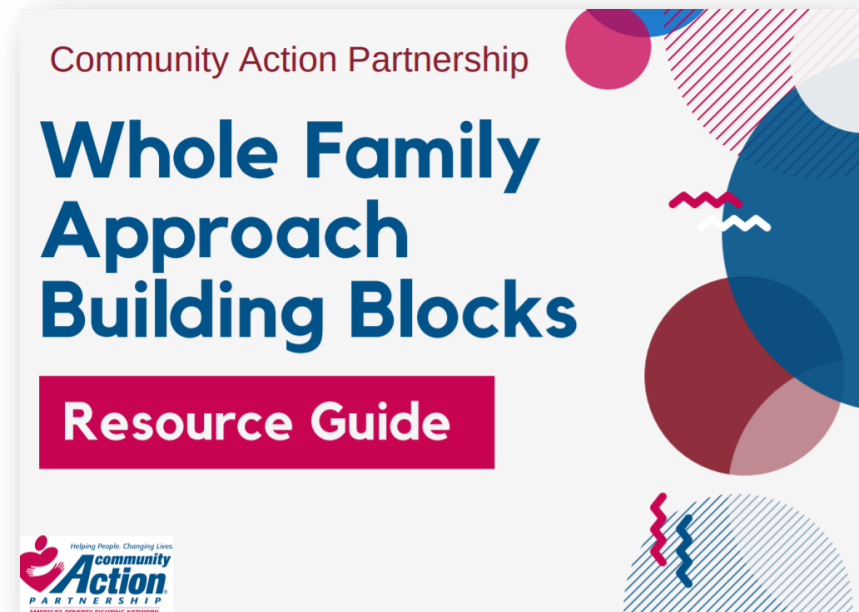
WHOLE FAMILY APPROACH BUILDING BLOCKS



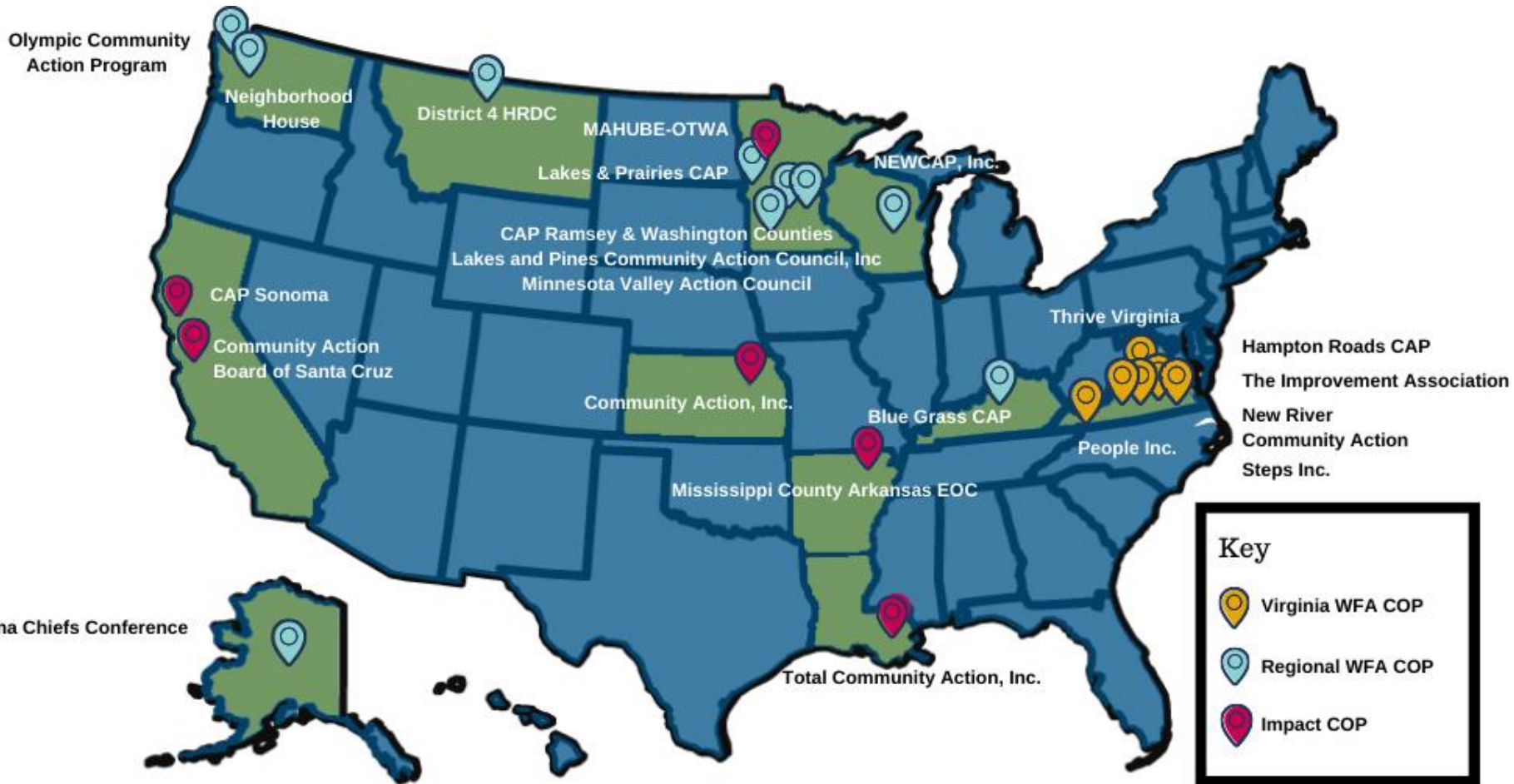
DECONSTRUCTING THE WFA BUILDING BLOCKS

- * Develop a theory of change and logic model
- * Utilize target population and recruitment protocols
- * Realign organization structures and supervision
- * Distribute staffing and case loads appropriately
- * Train staff in new practice approaches
- * Complete comprehensive family assessments
- * Individualize work with families to enable them to set their own goals
- * Share family goals across agency programs
- * Create space for culturally specific family activities
- * Place burden of service coordination on systems and programs rather than families
- * Consolidate/universalize intake process
- * Coordinate family and staff planning
- * Co-locate services
- * Coordinate with partners to fill gaps and provide comprehensive services
- * Provide high-quality services that are evidence and science-based
- * Use data to drive decision-making
- * Disaggregate race data and examine services and results by race
- * Adopt enterprise software/applications
- * Include parents in the guiding coalition
- * Pursue system changes that interrupt structural racism
- * Find ways to blend and braid funding streams
- * Incorporate strategic planning

Advancing WFA in Community Action

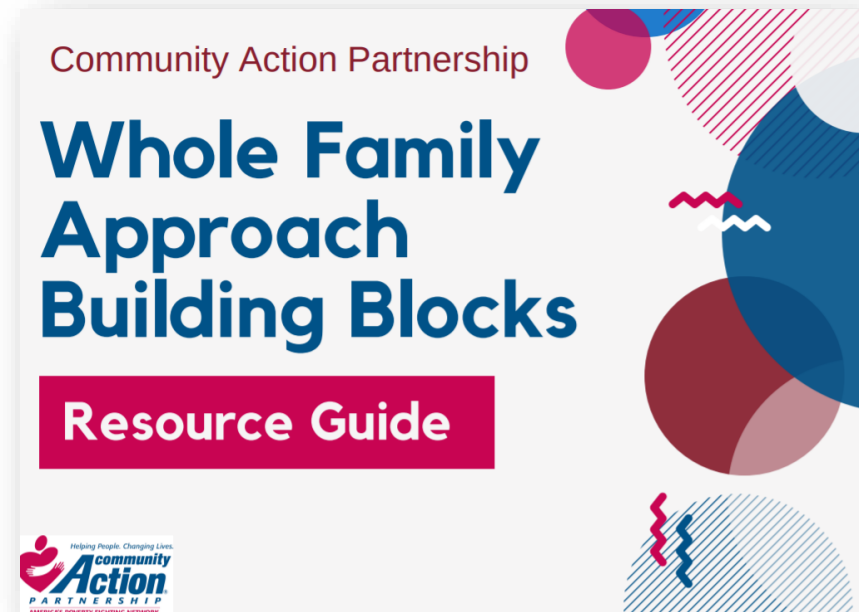


Current Cohorts



Whole Family Approach Resources

Advancing WFA in Community Action



2020 WFA Institute

[CAA Careers](#) [Press Room](#) [Subscribe](#) [🛒 0 Items](#)



[Home](#) [About Us](#) [Membership](#) [Find Your CAA](#) [Events](#) [Programs/Initiatives](#)
[Tools & Resources](#)

VIRTUAL WHOLE FAMILY APPROACH INSTITUTE

[Overview](#) | [Participant Packet](#) | [Videos](#) | [Presentations](#) | [Presenter Bios](#) | [Graphics](#)

[DOWNLOAD AGENDA](#)

communityactionpartnership.com/whole-family-convening



WFA One-Pager



WHAT IS WHOLE FAMILY APPROACH?

Whole Family Approaches build family well-being by intentionally and simultaneously working with children and the adults in their lives together. As children, parents, and families grow and change across their lifespan, Whole Family Approaches align opportunities to help families pursue their goals and thrive. Providing integrated, high-quality, intentional supports to parents and children at the same time through a Whole Family Approach (WFA) has the potential to improve both parent and child social and economic well-being producing a legacy of family well-being that passes from one generation to the next.

Access WFA resources:

Whole Family Approach Institute

Learn about WFA through resources curated at this virtual event, including access to transformation stories, learn from outside experts on foundational areas/topics, deepen knowledge of racial equity and trauma-informed practice, and learn about building blocks critical to WFA success. (<https://bit.ly/WFAInstitute>)

Whole Family Approach Design Briefs

A new series of design briefs showcasing accomplishments of peers and stakeholders that will be useful to agencies working toward making transformations and in conversations with existing and potential partners, funders, and other stakeholders. (<https://bit.ly/WFABriefs>)

Regional Whole Family Approach Community of Practice

- Bluegrass Community Action Partnership
- Community Action Partnership of Ramsey & Washington Counties
- District 4 HRDC
- Lakes and Pines Community Action Council
- Lakes and Prairies Community Action Partnership
- Minnesota Valley Action Council
- Neighborhood House
- Newcap, Inc.
- Olympic Community Action Programs
- Tanana Chiefs Conference

Virginia 2Gen Community of Practice

- Hampton Roads Community Action Program
- New River Community Action
- People Inc.
- STEPS, Inc.
- The Improvement Association
- Thrive VA

The publication was created by National Community Action Partnership in the performance of the U.S. Department of Health and Human Services, Administration for Children and Families, Office of Community Services, Grant Number 19C1048. Any opinions, findings, and conclusions, or recommendations expressed in this material are those of the author(s) and do not necessarily reflect the views of the U.S. Department of Health and Human Services, Administration for Children and Families.



Whole Family Approach Design Briefs

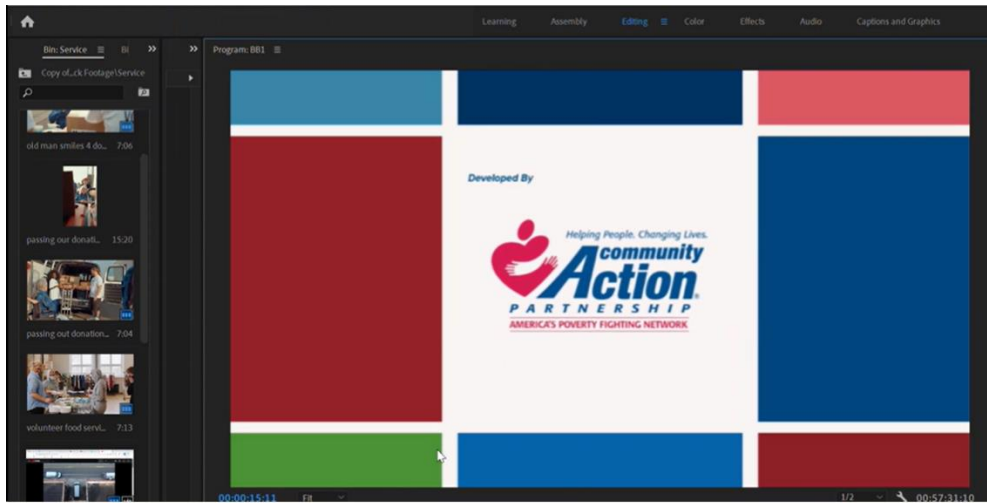
This series highlights examples of how Community Action Agencies from across the United States have put concepts into practice that build family well-being and social and economic mobility by working with children and their parents together.

More to
come!

Community Action Project of Tulsa County (OK)
MAHUBE-OTWA Community Action Partnership (MN)
Aroostook County Action Program (ME)
Blueprints (PA)
Community Action, Inc. (KS)



Whole Family Approach Design Videos



Community Action Academy

is the **free**, online learning hub for the Community Action Network, powered by Moodle. Access on-demand eCourses that include videos, resources, activities, quizzes, as well as engage with peers across the nation.

- Check out our [Family-Centered Coaching 101 Introduction Course!](#)
- Advancing Family-Centered Coaching 201 Course
- Additional topics include:
- A Community Action Guide to Fiscal Oversight
 - Overview of the CSBG Organizational Standards
 - Health Intersections
 - Implementing ROMA
 - ROMA for Boards
 - and more!



Create a free account today: <https://moodle.communityactionpartnership.com>



Other 2G/WFA Field-Building Resources

- 2Gen Outcomes Bank
- Making Tomorrow Better Together: Report of the 2Gen Outcomes Working Group
- Making Tomorrow Better Together: A Guide to Outcomes for 2Gen Policymakers
- Making Tomorrow Better Together: Process Outcomes and Measures for 2Gen Organizational Change
- State 2Gen Model: Maryland as a Case Study for Policymakers



Achieving Generative Leadership through the Human Services Value Curve

Join us for this **deep dive** to learn how the Human Services Value Curve inspires and equips leaders and policymakers of health and human services organizations, systems, and communities to envision and create a path for achieving better and more equitable outcomes for individuals, families, and communities, as well as improve and accelerate human services social and economic value for society.

Choose which session to attend:

- March 30th – 2:00pm-3:30pm ET -OR-
- April 6th – 2:00pm-3:30pm ET

HEALTH INTERSECTIONS CONVENING

Trauma & Resilience-Informed Inquiry for Adversity, Distress and Strengths (TRIADS)

Thursday, May 5, 2022

12:00pm - 3:00pm ET / 11:00am - 2:00pm CT /
10:00am - 1:00pm MT / 9:00am - 12:00pm PT

[Register now!](#)



Questions



**What additional resources would
you like to see developed
in the future?**

Contact Information

For more information or questions please contact:

- Jeannie Chaffin, Special Advisor, Whole Family Approach
chaffin.Jeannie@gmail.com
- Tiffany Day, Director, Whole Family Approach Innovations
tday@communityactionpartnership.com
- Aimee Roberge, Senior Associate, Learning and Dissemination
aroberge@communityactionpartnership.com
- Peter Coyne, Program Associate, Communication and Dissemination
pcoyne@communityactionpartnership.com



Thank you!